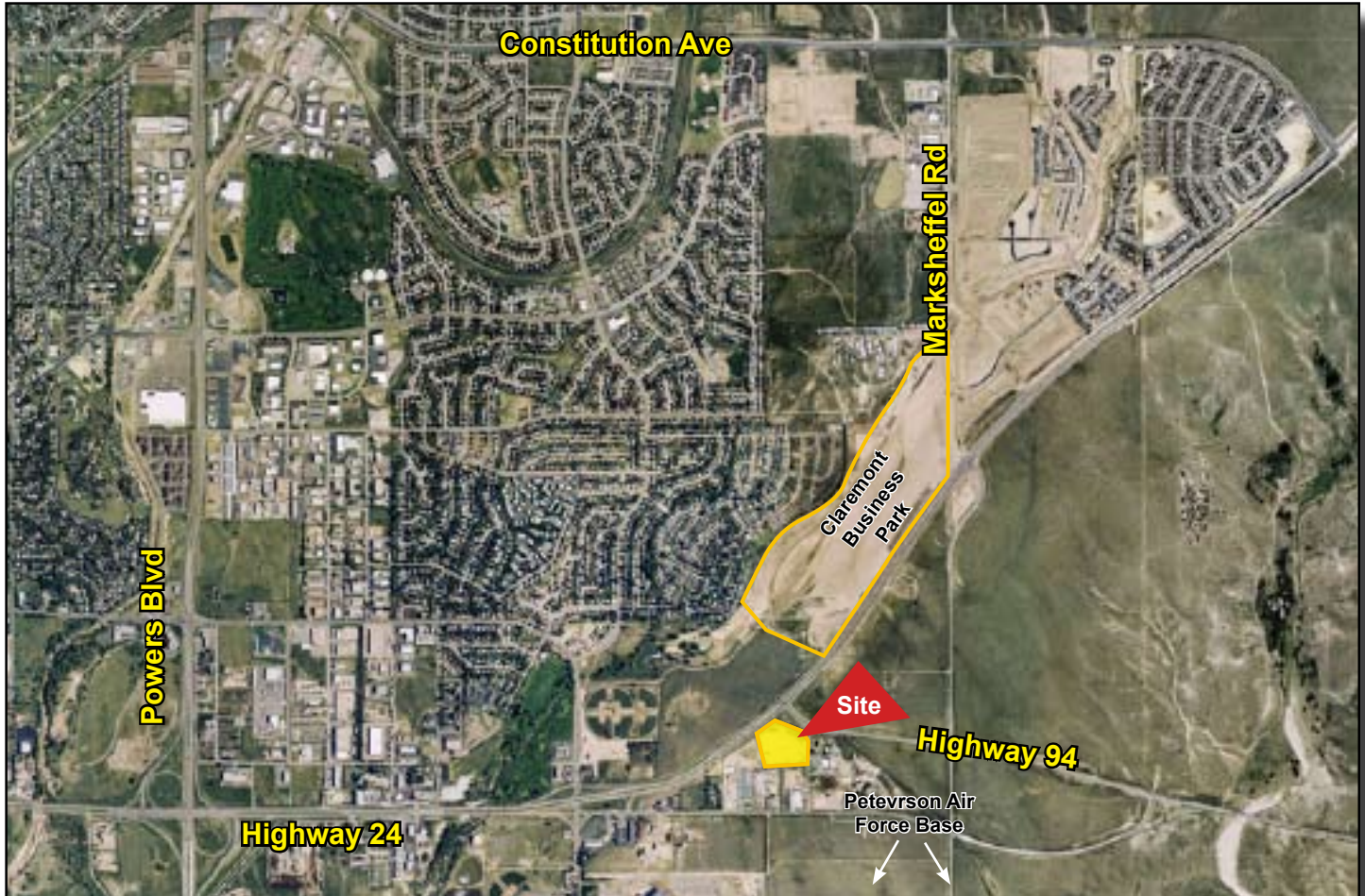


Excellent Exposure at Highway 24 & Highway 94!



I-2 County Zoning - Industrial

Site 1: 4.58 Acres
Sale Price: \$796,024/\$3.99 PSF
Infrastructure: Platted with water/sewer/utilities at site
Zoning: Industrial - 2

Site2: 3.04 Acres
Sale Price: \$ 528,365/\$3.99 PSF
Infrastructure: Platted with water/tap fee paid for /sewer/utilities at site
Zoning: Industrial - 2

John Rodgers, CCIM • President • john.rodgers@peakcp.net • 719.227.9988

Vacant Land for Sale

0 East Highway 24 • Colorado Springs, CO



0 East Highway 24 - Colorado Springs, CO



I-2 Zoning: Allows R.V, Auto & Boat Storage, Light Industry, and Manufacturing, Lumber Yard, Freight Terminal, Mini-Storage, Nursery Wholesale, Warehouse Distribution and many other industrial uses.

John Rodgers, CCIM • President • john.rodgers@peakcp.net • 719.227.9988